



Luminar 3

Reviewer's Guide

SKYLUM SOFTWARE



SKYLUM
software

Overview

What is Luminar?

Conveniently browse, rate, group your photos and much more...

With Luminar 3 your photos are the center of attention. A beautiful Interface offers a sleek canvas to enjoy all your images without extra distractions.

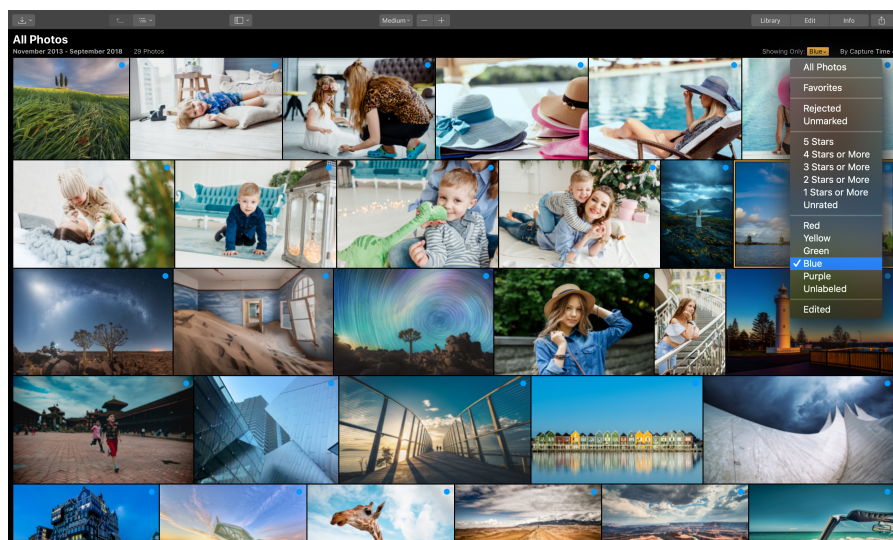
Automatically group your photos by year, month, and even day. Easily navigate between images and make sure that the perfect image you're looking for is always at hand.

Give all your photos the look you want in seconds. Make the necessary edits on a single image. And instantly sync all the adjustments with a click.



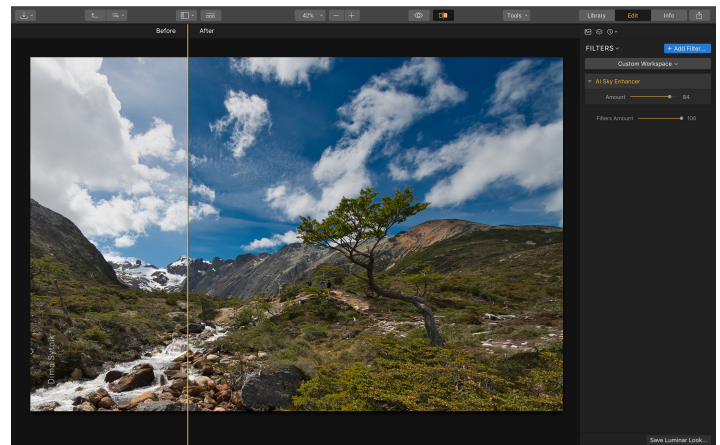
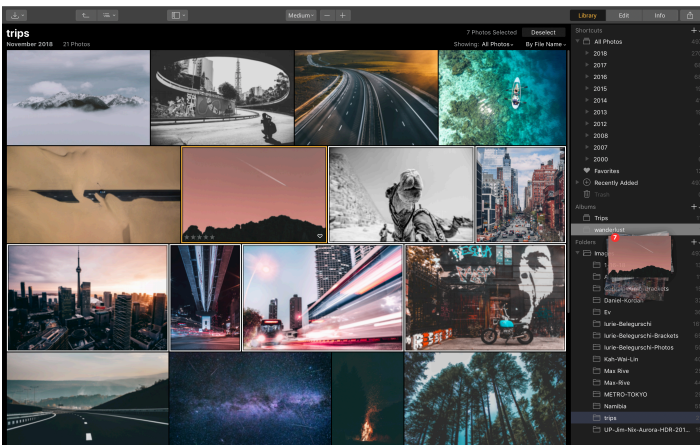
Luminar 3 is an all-in-one photo app designed to offers everything a modern photographer needs for photo editing. Luminar features advanced controls that are easy to use. Intelligent filters like Accent AI make it easy to get a great-looking image in seconds.

Users will also benefit from intelligent filters and real-time noise removal. With adaptive workspaces that match styles of shooting, Luminar adapts to deliver a complete experience that's avoid clutter and complexity. Experience it today at www.skylum.com.



New & Improved Features

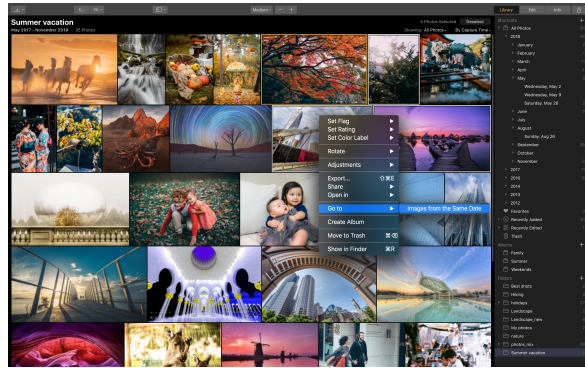
- **NEW:** Fully nondestructive workflow with editing your photos
- **NEW:** Luminar Library Panel for viewing and editing multiple photos
- **NEW:** Single Image View, Gallery View, and Filmstrip View
- **NEW:** Quickly sync adjustments between multiple images
- **NEW:** Rate Images with stars & mark them with color labels
- **NEW:** Flag Images as Favorites or Rejected
- **NEW:** Referenced folders always stay in sync
- **NEW:** Filtering and sorting on some criteria
- **NEW:** Smart Shortcuts for automatically organizing your photos
- **NEW:** Luminar Photos Trash to clean up media and drives
- **NEW:** Quick Edits for editing single images
- **NEW:** All New Luminar Looks with AI
- **IMPROVED:** Info Panel
- **IMPROVED:** Custom Color Profiles (Windows)
- **IMPROVED:** Speed improvements
- **IMPROVED:** Export performance (Windows)
- **IMPROVED:** Filter Controls (Windows)
- **IMPROVED:** Plug-in performance (Windows)
- **IMPROVED:** Help menu and Support area



Top 10 Benefits

1. An adaptive interface for a more enjoyable experience
2. Accent AI Filter – the world's most intelligent photo enhancer
3. Adaptive Luminar Looks & creative Lookup Tables (LUTs)
4. Precision raw format editing
5. Get truly organized with the new Library panel
6. Beautiful edits, 100% nondestructive
7. Precision adjustments without selections
8. Luminar is a team player
9. Unique adjustments found nowhere else
10. 100% Cross-platform and perfect for the entire household

Getting Started



Installation

Luminar 3 is installed from a single DMG or .EXE file. To install the application, follow these instructions:

For Mac:

1. Double-click **Luminar_3.dmg** to open the installer.
2. Drag the application into your Applications folder.
3. Choose Go > Applications to navigate to your Applications folder.
4. Locate the **Luminar 3** application and double-click to launch.
5. Enter your email address and your activation key (from your activation email) to complete installation and registration.
6. Click Activate to launch the application.

For Windows:

1. Double-click **Luminar_3_Setup.exe** to launch the installer application and begin the installation process.
2. Click Install to start the installer. You may need to grant the installer permission to proceed
3. When the installer is complete, leave the checkbox marked for **Run Luminar 3** and click Finish.
4. Review and agree to the License Agreement.
5. Enter the email address you used when purchasing the software and your activation key to complete installation and registration. The application is now ready to use.
6. Click Activate to launch the application.

Getting Started



Using Luminar

Standalone / Host operation

Luminar 3 may be used as a standalone application or as a plug-in to the following host applications:

Windows & MacOS

- Adobe Photoshop
- Adobe Lightroom Classic CC

MacOS-only

- Adobe Photoshop Elements
- Apple Aperture
- Photos for MacOS



You can access Luminar 3 from many different host applications in the following way:

• Adobe Photoshop

- When editing an Image: Filter > Skylum Software > Luminar 3

• Adobe Lightroom Classic

- When viewing an Image in either the Library or Develop modules: Right-click on the image > Edit In > Luminar 3
- From the menu bar choose Photo > Edit In > Luminar 3

• Apple Aperture

- Select an image and go to Photos > Edit with Plug-in and select Luminar 3

• Photos for MacOS

- Select an image, click Edit and then go to: Extensions > Luminar 3

Interface Walk-Through

Luminar 3 has two primary views. The **Library** view is for browsing and navigating your photos. The **Edit** view is for enhancing your images. The interface is intuitive and easy to navigate.

Note: *this document is intended to be a brief overview, not a comprehensive help guide. More extensive explanations, use case examples and videos are available from www.skylum.com/luminar*



Library Toolbar

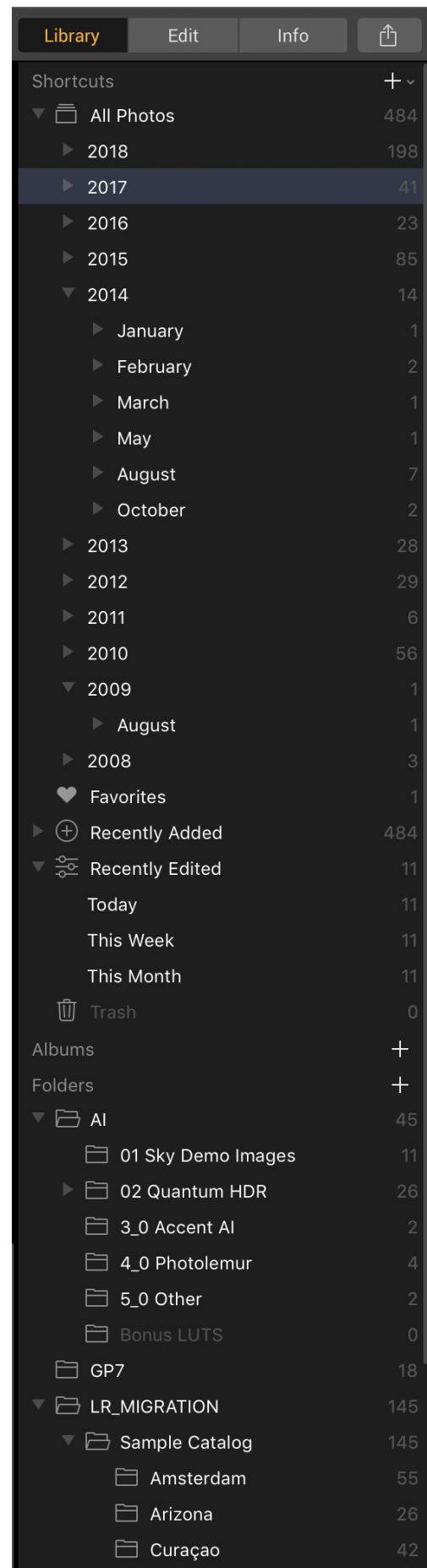
Across the top of the Library is the Library Toolbar. Here are the buttons from left to right:

- **Open Button Menu.**
 - **Import Images To.** Copies images into a destination folder.
 - **Add Folder.** Add an existing folder on your computer to your Luminar library.
 - **Open Images for Quick Edit.** Bring individual images into Luminar for editing.
- **Navigation Buttons.**
 - **Navigate Up.** Go up one folder in your Luminar library.
 - **Current Location.** View the current folder and navigate to adjacent folders in the file structure.
- **Show Button.** Open and close the Side panel
- **Magnification Buttons.**
 - **Thumbnail Size.** A list of preset magnification levels for image thumbnails when navigating in the Grid view.
 - **Zoom Out and Zoom In.** Adjust the zoom level with the + or - buttons.
- **View Buttons.**
 - **Library.** Browse image folders and albums.
 - **Edit.** Adjust an image with filters for a perfect appearance.
 - **Info.** View a selected image's metadata to learn more about a file.
- **Share Image.** Export your image to other services or applications.

Library Side Panel

Luminar uses a series of shortcuts, albums, and folders to help you keep your images organized.

- **Shortcuts.** Quickly access your library with a series of convenient shortcuts.
 - **All Photos.** Browse your library by Year, Month, or Day
 - **Favorites.** See all of your images that you've flagged as Picks (just click the heart icon or press P when an image is selected).
 - **Recently Added.** Quickly see images that have been recently added to your library.
 - **Recently Edited.** Review images that have been recently edited.
 - **Trash.** Review images that you've queued for deletion. The images can either be deleted and moved to the system trash for cleanup or returned to the Luminar library.
- **Albums.** Place your photos into virtual collections. You can choose images from any location or folder. Adding and removing has no effect on your actual files on the hard drive, rather use an album like a you would a playlist to organize music.
- **Folders.** Folders tie directly to folders on your hard drive. Luminar works with the real-world folder structure of your hard drive(s).
 - **Master Folder.** When you select a folder, it will be added as a top level folder to your folder collection. All folders contained within are also added.
 - **Subfolders.** Any folders contained within a Master folder are added as subfolders. Additional folders within those folders are also added. You can add additional subfolders to any folder in the future by right-clicking on a folder and choosing the **New Subfolder** command.



Editing Toolbar

Across the top of the Edit mode is the Editing Toolbar. Here are the buttons from left to right:

- **Open Button Menu.**

- **Import Images To.** Copies images into a destination folder.
- **Add Folder.** Add an existing folder on your computer to your Luminar library.
- **Open Images for Quick Edit.** Bring individual images into Luminar for editing.

- **Navigation Buttons.**

- **Navigate Up.** Go up one folder in your Luminar library.
- **Current Location.** View the current folder and navigate to adjacent folders in the file structure.

- **Show Button.**

- **Filmstrip.** A thin stripe of images along the left edge to browse images in the same folder or group.
- **Side Panel.** Access the Library, Edit, or Info panel.
- **Current Photo Actions** View the name, rating, and labels for the selected image.

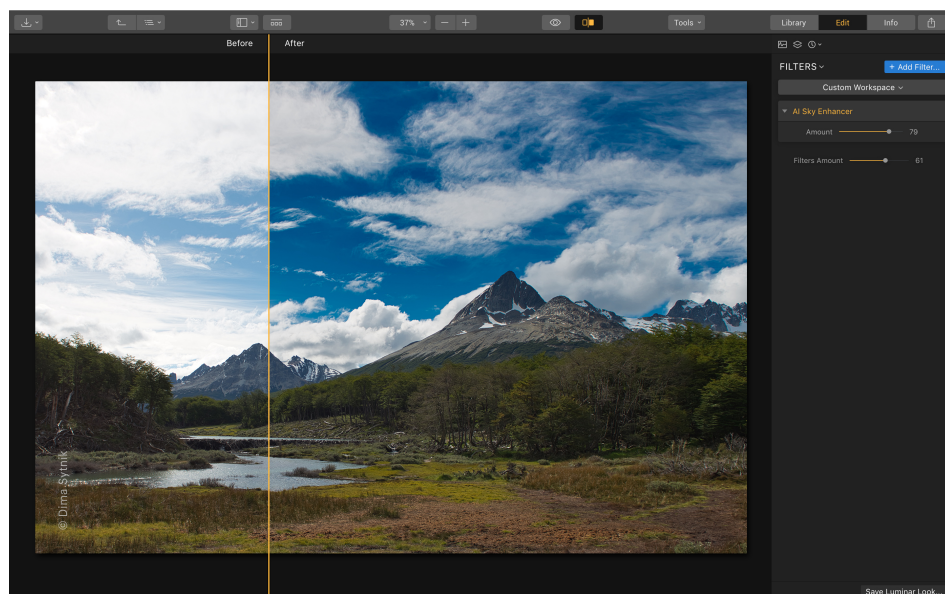
- **Show Luminar Looks.** Activate the Looks Browser for one-click presets and recipes.

- **Magnification Buttons.**

- **Thumbnail Size.** A list of preset magnification levels for image thumbnails when navigating in the Grid view.
- **Zoom Out and Zoom In.** Adjust the zoom level with the + or - buttons.

- **Comparison Buttons.**

- **Quick Preview.** The eyeball icon can quickly toggle between the original image and the enhanced version..
- **Compare Button.** This button activates a comparison where the image is divided by a vertical strip ("curtain"). The original image (Before) is displayed on the left, and the current result (After) is on the right.





- **Tools Menu.**

- **Crop Tool.** The Crop tool allows you to hide parts of an image to change its composition or to prepare it for display at a certain size or aspect ratio.
- **Free Transform Tool.** This tool makes it easy to transform a layer.
- **Clone & Stamp Tool.** The Clone & Stamp tool lets you sample pixels from one part of the image (just hold down the Option key and click on the source pixels). You can then click and paint in another part of the image to add those pixels.
- **Erase Tool.** This tool paints on an unwanted pixels to remove them.

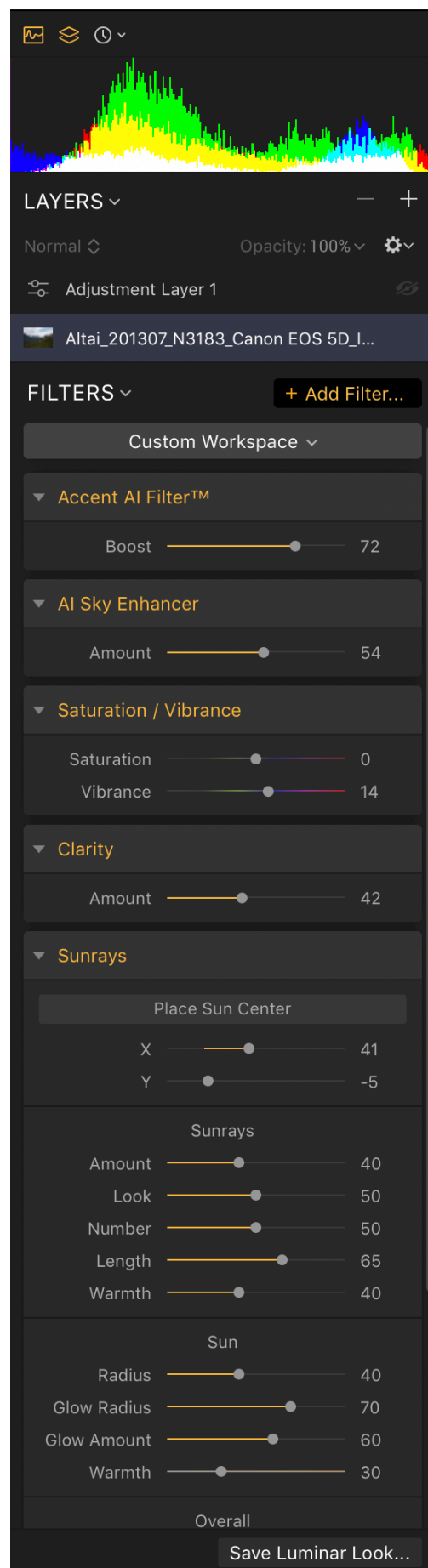
- **View Buttons.**

- **Library.** Browse image folders and albums.
- **Edit.** Adjust an image with filters for a perfect appearance.
- **Info.** View a selected image's metadata to learn more about a file.

- **Share Image.** Export your image to other services or applications.

Side Panel

- **Show/Hide Histogram Button:** Displays or hides the image histogram to better judge exposure and color clipping.
- **Show/Hide Layers Button:** Displays or hides layers for designing composite images with layer masks and blending modes.
- **History Button.** Luminar keeps a list of what you have done to the image since you opened it. These are multiple undos and an easy way to go back in time. Simply click on an earlier History State to revert the photo to that stage of editing. History states are also saved with an image automatically in your Luminar catalog.
- **Histogram:** Displays the complete tonal range of your image from dark to light. Clicking on the arrows in the upper left and right corners will highlight clipped (pure black and white) areas.
- **Layers:** These are a great way to organize your editing activities to create the best image possible by placing different effects or editing steps on separate layers. Each layer that is added can have a separate effect, opacity, mask and blend mode.
- **Filters Control Menu:** Controls the behavior of an existing filter layer or creates a new preset.
- **Add Filters Button:** Brings up the Filters browser so you can browse and use all of the filters included with Luminar 3
- **Workspace Switcher:** Change which filters are visible by default using included workspaces.
- **Filter Controls:** Adjust the properties for a selected filter. Hover of the title bar to see controls for visibility and masking.
- **Save Luminar Look Button:** Saves the added filters and their properties as an editable Luminar Look. Custom looks are an excellent way to save time when working.





Other Controls

- **Image Canvas:** The view portal that shows you the image as your edit.
- **Canvas Background:** You can change the background color of the canvas by choosing View > Background > (Color). Different shades of gray are offered to provide proper contrast and a neutral viewing area.
- **Looks Browser:** Presets have been created by the teams at Skylum and professional photographers to help provide amazing images in a single click. Each preset is made up of the application of one or more native tools in Luminar 3, so any user can create their own using the native capabilities of the software.
- **Looks Categories Browser:** Click the pop-up menu at the left of the Luminar Looks Browser to change categories.

Editing Walk-Through

Luminar Walkthrough

A quick walkthrough of how to import, rate, and organize images. You'll also learn how to edit a photograph using Workspaces and filters.



[WATCH NOW](#)



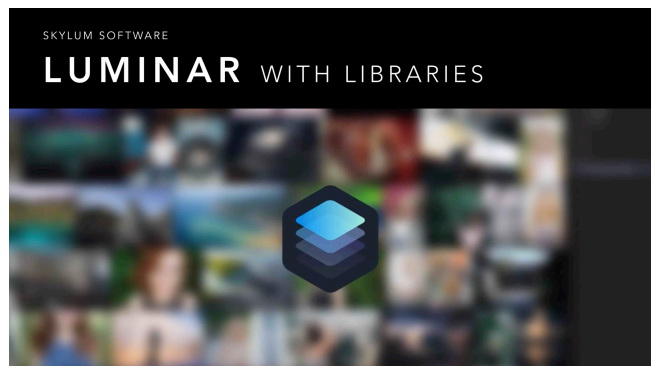
<https://youtu.be/8G-S8rqs0ZU>

Product Overview

A comprehensive briefing on Luminar. Learn why **Luminar 3** works the way it does and how artificial intelligence can streamline your workflow



[WATCH NOW](#)



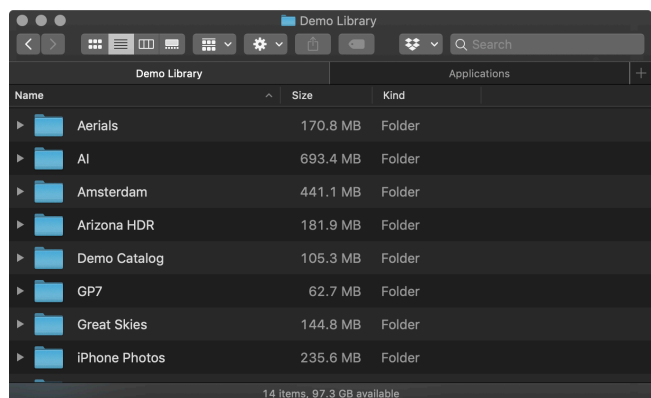
https://youtu.be/g5n0_zcxFvY

Hands-On Files

We've built a collection of sample photos which you can use for screenshots or video reviews.



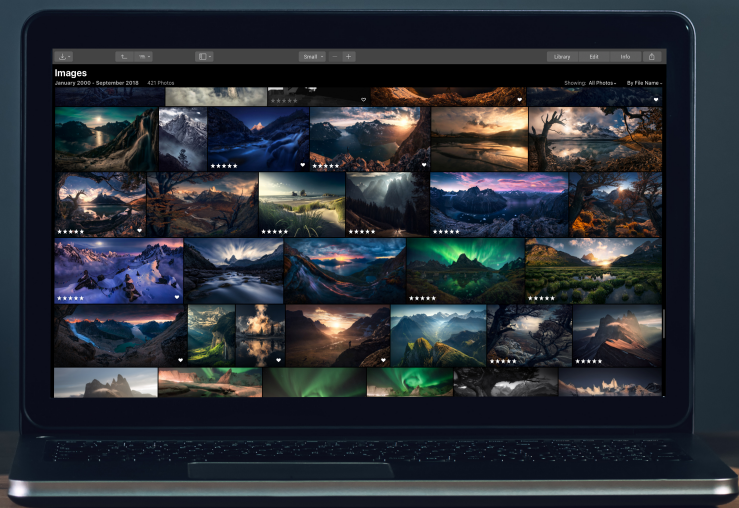
[DOWNLOAD](#)



<https://www.dropbox.com/sh/vzskbi2jbgeptwg/AAAt3thKnvGxjALAKhluyVMa/Sample%20photo%20gallery?dl=0>



Luminar 3



SKYLUM
software

MEDIA CONTACT
MARIA GORDIENKO
MARIA@SKYLUM.COM